

## 6' Parking Blocks

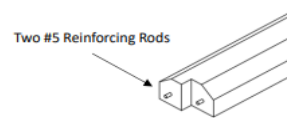
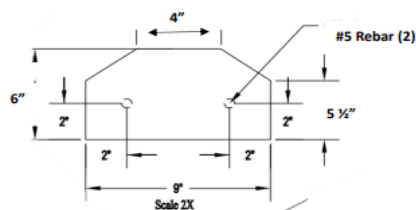
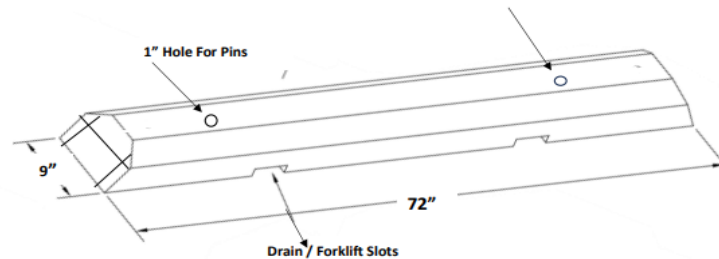
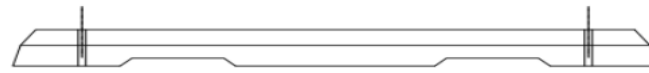
Two rebar pins included for installation.

9" x 6" x 72"

250 LBS

\$52

Our parking curbs are manufactured with 4,000# psi concrete and reinforced with steel rebar. They are also cast with holes for steel anchors and slots underneath for drainage.



**6' Concrete Parking Bumper**  
4,000 PSI Concrete  
6' X 9" W x 6" H

General All Purpose Bumper  
Two #5 Reinforcing Rods  
Two #5 Rods of 12" Hold Down Pins  
Weights 250 lbs.