



6' Parking Blocks

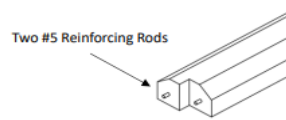
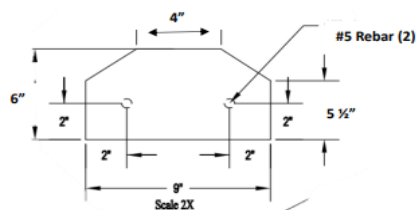
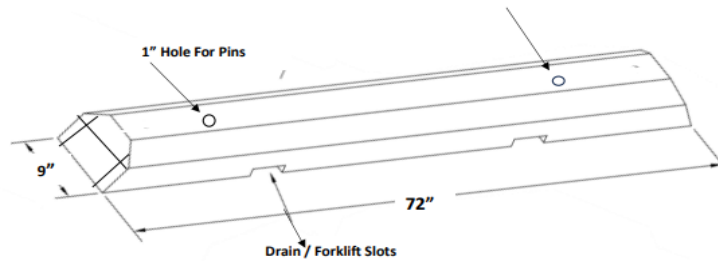
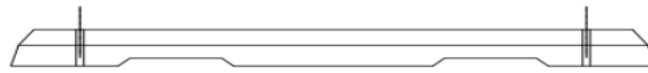
Two rebar pins included for installation.

9" x 6" x 72"

250 LBS

\$50.75

Our parking curbs are manufactured with 4,000# psi concrete and reinforced with steel rebar. They are also cast with holes for steel anchors and slots underneath for drainage.



6' Concrete Parking Bumper
4,000 PSI Concrete
6' X 9" W x 6" H

General All Purpose Bumper
Two #5 Reinforcing Rods
Two #5 Rods of 12" Hold Down Pins
Weights 250 lbs.


CONCRETE DECO
2734 South 8750 West
Magna, Utah 84044
(801)336-7868