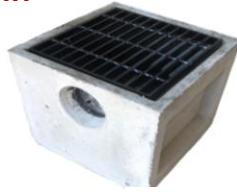


12"x12"x12" Catch Basin

\$180

Box with steel grate included.



150 LBS

- Light traffic loading
- Knockouts on two sides,

- Accommodates 2", 3", 4" pipe.
- Just tear out the size you need and slide your pipe into the seal.

12"x12"x18" Catch Basin

\$230

Box with steel grate included.



190 LBS

- Light traffic loading
- Knockouts on two sides,

- Accommodates 2", 3", 4" pipe.
- Just tear out the size you need and slide your pipe into the seal.

18"x18"x24" Yard Drain Box

\$340

Box with steel grate included.



400 LBS

- Light traffic loading
- Knockouts on all four sides
- Accepts up to a 16" pipe

Knock-Out Boxes Catch Basin

2'x3'x4' Inside dimensions

(Curb Inlet Box)

4,000 LBS

Box only \$380

3'x3'x4' Inside dimensions

4,200 LBS

Box with frame only \$450

2'x2'x4' Inside dimensions

3,300 LBS

Box with frame only \$340

2'x2'x3' Inside dimensions

2,200 LBS

Box with frame only \$290

**Steel & Cast-Iron Grates are available.
(Sold Separate)**

4000 PSI Concrete
Reinforcing 6x6 Mesh 10/10 Box cage
#4 Rebar bar verticals on each corner

